

HP ProOne 440 G9 PC (A55BJET)



Rendimiento de clase profesional. Diseño All-in-One

El ordenador multifunción HP ProOne 440 ofrece a los usuarios rendimiento, seguridad y escalabilidad comerciales con un diseño que ahorra espacio. Este ordenador cuenta con los procesadores Intel® más recientes y está protegido por una seguridad siempre activa en la que puedes confiar.

HP recomienda Windows 11 Pro para empresas

Cámara de 5 MP

Capta todos los detalles de distintos entornos gracias a la cámara de 5 MP.

Protegido por HP Wolf Security

HP Wolf Security for Business crea una defensa resistente, siempre activa y reforzada por hardware.

Procesador Intel® Core™

Mantén la productividad durante todo el día gracias al procesador Intel® Core™ más reciente.

Incluye

Windows 11 Pro

Trabaje en cualquier lugar sin comprometer el rendimiento o la seguridad con Windows 11 con la tecnología de colaboración y conectividad de HP.

El procesador multinúcleo de Intel® más reciente.

Configura la CPU del All-in-One para la perfecta combinación de potencia, rendimiento y valor. El procesador Intel® más reciente. Maneja varias tareas de manera fluida y fiable, con múltiples núcleos de procesamiento para dividir la carga de trabajo.

Recuperación automática ante ataques de firmware

Los ataques de firmware pueden destruir por completo tu ordenador. Protégete con la BIOS autorreparadora de HP. HP Sure Start Gen6 soluciona automáticamente problemas relacionados con malware, rootkits o corrupción.

Navegación Segura

Proteja su ordenador de páginas web y lea solo archivos adjuntos de Microsoft Office y PDF con malware, ransomware o virus incorporados con la seguridad ejecutada en el hardware de HP Sure Click.

Especificaciones

Sistema operativo	Windows 11 Pro
Factor de Forma	All in One
Familia de procesadores	Intel® Core™ i5 14th generation processor, Passmark 21482, fecha de lanzamiento: Q1'24 (Intel Core i5 processor 14500T 24M Cache up to 4.80 GHz Product Specifications)
Procesador	Intel® Core™ i5-14500T (up to 4.8 GHz with Intel® Turbo Boost Technology, 24 MB L3 cache, 14 cores, 20 threads) Chipset Q670
Memoria	16 GB DDR5-4800 MHz RAM (1 x 16 GB)
Ranuras de Memoria	2 Ranuras de Memoria, 1 disponible
Almacenamiento interno	512 GB PCIe® NVMe™ SSD
Pantalla	Pantalla FHD de 23,8" (60,5 cm) en diagonal
Gráficos	Integrada. res min: 800x600
Gráficos Integrados	Intel® UHD Graphics 770
Sonido	Códec Realtek ALC3252, conector de audio universal con soporte para auriculares CTIA y OMTP
Dimensiones mínimas con Stand (ancho x fondo x alto)	53,93 x 22,5 x 37,94/50,94 cm
Peso	7,775 kg (El peso exacto depende de la configuración.)
Teclado	HP USB Business Slim SmartCard CCID Keyboard Integrado con soporte de DNIe 3.0
Dispositivo señalador	HP 125 Wired Mouse
Puertos	1 combo de auriculares/micrófono; 1 USB SuperSpeed Type-C® con velocidad de señal de 10 Gbps; 3 USB SuperSpeed Type-A con velocidad de señal de 10 Gbps
Ranura Expansión	1 M.2 2230; 1 M.2 2280, 1 ranura M.2 para combinación de WLAN y Bluetooth®. 2 ranuras M.2 2280 para almacenamiento. 1 RJ-45; 1 HDMI 1.4; 2 SuperSpeed USB Type-A con velocidad de señal de 5 Gbps (carga); 2 SuperSpeed USB Type-A con velocidad de señal de 10 Gbps (carga); 1 DisplayPort™ 1.4a
Dimensiones del embalaje (ancho x fondo x alto)	66 x 19.5 x 46.2 cm
Peso del Embalaje	12,12Kg
Tipo de interfaz de Red	Wlan
Inalámbrico	Realtek 8852BE Wi-Fi 6 +Bluetooth 5.3 WW WLAN
Chip TPM y SecureBoot	TPM 2.0 y SecureBoot
Etiquetas ecológicas	EPEAT™ Gold certified ENERGY STAR® certified TCO certified
Soporte del fabricante	Soporte técnico presencial bajo las condiciones de la garantía limitada de 1 año a domicilio, incluyendo piezas y mano de obra. Servicio de 1 año de HP Wolf Pro Security Edition. Para consultar las condiciones, visite https://h20195.www2.hp.com/v2/GetPDF.aspx/4AA8-1150ESE
Garantía del fabricante	Opciones de garantía limitada de software de 1 año y 90 días según el país. Las baterías incluyen de forma predeterminada una garantía limitada de un año. Visita http://www.hp.com/support/batterywarranty/ para obtener más información sobre las baterías. Los servicios HP Care Pack son contratos opcionales de servicio técnico ampliado que van más allá de las garantías limitadas estándar. Para elegir el nivel adecuado de servicio técnico para tu producto HP, utiliza la herramienta de búsqueda de servicios HP Care Pack en: http://www.hp.com/go/cpc .

Accesorios y servicios recomendados para su Ordenador HP

HP dispone de un amplio catálogo de opciones y accesorios testeados para su ordenador HP. Al adquirir estos accesorios de forma conjunta con su ordenador HP, estos accesorios tendrán la misma garantía y soporte técnico que su ordenador.

A través de su distribuidor puede obtener un listado completo de accesorios y servicios que le proporcionen la mejor experiencia y soporte técnico.



Desglose de las evidencias para el caso del ordenador de sobremesa + monitor

ORDENADOR SOBREMESA	HP ProOne 440 G9
CPU	
Procesador	Intel Core i5-14500T
Velocidad (GHz)	4.8 GHz frecuencia máxima o turbo

Núcleos físicos	14 núcleos
Fecha de lanzamiento	Q1'24
Puntuación PassMark	21482
Otros dispositivos	
Memoria RAM	16 GB DDR5-4800
Almacenamiento interno	512 GB SSD NVMe
Sistema Operativo	Windows 11 Pro-64
Tarjeta gráfica	Intel UHD Graphics 770: Resolución máxima (HDMI): 4096 x 2160 @ 60Hz Resolución máxima (DP): 7680 x 4320 @ 60Hz
Tarjeta de sonido	Integrada
Conectividad inalámbrica	
WiFi	WiFi 6
Bluetooth	Bluetooth 5.3
Interfaces E/S	
USB 3.0 tipo A	3 x USB Tipo A 10 Gbps 2 x USB Tipo A 5 Gbps
USB 3.0 tipo C	1 x USB 3.1 Tipo C (DisplayPort + Power Delivery + USB)
Red Ethernet	1 x RJ-45 1 Gbps
Video	HDMI 1.4
Audio E/S	Interfaz de audio jack 3.5 mm
Certificados energéticos	
EPEAT	SI
Energy Star 8.0	SI
TCO	SI
ECMA 370	SI
Certificados de robustez	
Certificación MIL STD 810H	Método de prueba 501.7 Alta temperatura Método de prueba 502.7 Baja temperatura Método de prueba 507.6 Humedad Métodos adicionales: Caída Choque Funcional Vibración (Categoría 4) Vibración (Categoría 5) Vibración (Categoría 24) Polvo Humedad Altitud (Procedimiento I) Altitud (Procedimiento II) Alta Temperatura (Procedimiento I) Alta Temperatura (Procedimiento II) Baja Temperatura (Procedimiento I) Baja Temperatura (Procedimiento II) Choque de Temperatura Arena Congelación/Descongelación Choque de Manipulación en Banco Choque de Peligro de Colisión Choque de Transporte
Seguridad	
Arranque seguro	Sí
Chip	TPM 2.0

MONITOR	Sí (diseño All-in-One) se incluye junto con el ordenador
Tamaño de la pantalla	23.8" pulgadas
Resolución mínima	Igual o mayor que FullHD
Tecnología de visualización	IPS
Interfaz HDMI	Sí
Etiqueta energética UE	Sí
Incluye cable HDMI	NO

OTROS PERIFÉRICOS	Se incluye	
Teclado	Sí	Teclado español ES-ES
Ratón	Sí	Ratón óptico con dos botones y scroll
Webcam	Sí, incorporada en la pantalla	Webcam 5MP con obturador de privacidad Sí es compatible con reconocimiento facial
Lector de tarjetas inteligentes integrado ISO-7816 (DNI-e)	Sí, incorporado en el teclado	
Lector de huellas dactilares	NO	
Otro dispositivo de identificación biométrica	NO	

MIL- STD 810 HP ProOne All-in-One Desktop PC

Test	HP Pro Mini/SFF 400 G9; HP Pro Tower 400/480 G9	HP ProOne 440 G9 All-in-One
Tested Under	810H	810H
Drop	Passed	Passed
Functional Shock	Passed	Passed
Vibration (Category 4)	Passed	Passed
Vibration (Category 24)	Passed	Passed
Dust	Passed	Passed
Humidity	Passed	Passed
Altitude (Procedure I)	Passed	Passed
Altitude (Procedure II)	Passed	Passed
High Temperature (Procedure I)	Passed	Passed
High Temperature (Procedure II)	Passed	Passed
Low Temperature (Procedure I)	Passed	Passed
Low Temperature (Procedure II)	Passed	Passed
Temperature Shock	Passed	Passed





(en) DECLARATION OF CONFORMITY / (de) KONFORMITÄTSERLÄRUNG / (fr) DÉCLARATION DE CONFORMITÉ / (es) DECLARACIÓN DE CONFORMIDAD

DoC #: HSC-I003-24- R7

<p>(en) Manufacturer's Name (de) Herstellername (fr) Nom du fabricant (es) Nombre del fabricante</p>	<p align="center">HP Inc.</p>	
<p>(en) Manufacturer's Address (de) Adresse des Herstellers (fr) Adresse du fabricant (es) Dirección del fabricante</p>	<p align="center">1501 Page Mill Road, Palo Alto, CA 94303-1112 USA</p>	
<p>(en) declare, under its sole responsibility that the product (de) erklärt, dass das Produkt (fr) déclare que le produit (es) declara que el producto</p>		
<p>(en) Product Name and Model^{5.2} (de) Produktname und Modell^{5.2} (fr) Nom du produit et modèle^{5.2} (es) Nombre del producto y modelo^{5.2}</p>	<p align="center">HP ProOne 440 23.8 inch G9 All-in-One Desktop PC;HP ZHAN 99 Pro 23.8 inch G9 All-in-One Desktop PC</p>	
<p>(en) Regulatory Model Number^{5.1} (de) Regulatorische Modell Nummer^{5.1} (fr) Numéro de modèle réglementaire^{5.1} (es) Número de modelo reglamentario^{5.1}</p>	<p align="center">HSC-I003-24</p>	
<p>(en) Product Options (de) Produktoptionen (fr) Options du produit (es) Opciones del producto</p>	<p align="center">(en) Please See ANNEX 1 (de) Siehe Anhang I (fr) Voir l'annexe I (es) Ver Anexo I</p>	
<p>(en) conforms to the following Product Specifications and Regulations (de) entspricht den folgenden Produktspezifikationen und Vorschriften (fr) est conforme aux normes et règlements de produit suivants (es) cumple con las siguientes especificaciones y normas de productos</p>		
<p>(en) Safety / (de) Sicherheit / (fr) Sécurité / (es) Seguridad IEC 60950-1:2005 +A1:2009 +A2:2013 IEC 62368-1:2018 EN IEC 62368-1:2020 +A11:2020 EN 50665:2017 EN 50663:2017 EN 62311:2008 EN 62479:2010</p>	<p>(en) EMC / (de) EMV / (fr) EMC / (es) EMC EN 301 489-1 V2.2.3 EN 301 489-3 V2.1.1 EN 301 489-17 V3.2.4 EN 55032:2015+A11:2020 Class B EN 55035:2017+A11:2020 CISPR 32:2015+A1:2019 EN 61000-3-2:2014 EN 61000-3-3:2013 +A1:2019 FCC CFR 47 Part 15 ICES-003, Issue 7</p>	<p>(en) Spectrum / (de) Frequenzspektrum / (fr) Spectre radioélectrique / (es) Espectro radioeléctrico EN 301 893 V2.1.1 EN 300 328 V2.2.2 EN 300 440 V2.2.1 EN 303 687 V1.1.1</p>
<p>(en) Ecodesign / (de) Öko-Design / (fr) Écoconception / (es) Diseño ecológico Regulation (EU) No. 617/2013 EN 62623:2013</p>		
<p>RoHS EN IEC 63000:2018</p>		
<p>(en) The product herewith complies with the requirements of the following and carries the CE-marking accordingly (de) Das Produkt hiermit entspricht den Anforderungen der folgenden und trägt das entsprechende CE-Kennzeichen (fr) Le produit est conforme aux exigences suivantes et porte le marquage CE en conséquence (es) El producto presente cumple con los requisitos de lo siguiente y conlleva el marcado CE en consecuencia</p>	<p align="center">Radio Equipment Directive 2014/53/EU Ecodesign Directive 2009/125/EU RoHS Directive 2011/65/EU Battery Regulation 2023/1542</p>	
<p>UK ONLY: This product herewith complies with the requirements of the following and carries the UK CA marking.</p>	<p align="center">Radio Equipment Regulations 2017 Ecodesign for Energy-Related Products Regulations 2010</p>	

(en) DECLARATION OF CONFORMITY / (de) KONFORMITÄTSERKLÄRUNG / (fr) DÉCLARATION DE CONFORMITÉ / (es) DECLARACIÓN DE CONFORMIDAD

DoC #: HSC-I003-24- R7

	Restriction of the Use of Certain Hazardous Substances in Electrical and Electronic Equipment Regulations 2012
U.S. ONLY: This device complies with part 15 of the FCC Rules. Operation is subject to the following two conditions: (1) This device may not cause harmful interference, and (2) this device must accept any interference received, including interference that may cause undesired operation.	
(en) Additional Information (de) Zusätzliche Information (fr) Informations complémentaires (es) Información Adicional:	
5.1) (en) This product is assigned a Regulatory Model Number which stays with the regulatory aspects of the design. The Regulatory Model Number is the main product identifier in the regulatory documentation and test reports, this number should not be confused with the marketing name or the product numbers. (de) Für die regulatorischen Aspekte zum Design wurde diesem Produkt eine Regulatorische Modell Nummer zugeordnet. Zur Produktidentifizierung in der regulatorischen Dokumentation und den Prüfberichten wird diese Regulatorische Modell Nummer verwendet und sollte nicht zu Verwechslungen von Marketingnamen oder Produktnummern führen. (fr) A ce produit est assigné un numéro de modèle réglementaire qui est associé avec les aspects réglementaires liés à la conception du produit. Le numéro de modèle réglementaire est le principal identificateur du produit dans la documentation réglementaire et les rapports d'essais, ce nombre ne doit pas être confondu avec le nom commercial ou les numéros de produit. (es) A este producto se asigna un número de modelo regulatorio que cumple con los aspectos regulatorios del diseño. El número de modelo normativo es el identificador principal del producto en la documentación reglamentaria e informes de ensayo, este número no se debe confundir con el nombre comercial o los números del producto.	
5.2) (en) This product was tested in a typical HP environment. (de) Dieses Produkt wurde in einer typischen HP Konfiguration getestet. (fr) Ce produit a été testé dans un environnement typique HP. (es) Este producto se ha probado en un entorno típico de HP.	
(en) The listed Notified Body issued the listed EU-type examination certificate, according to Annex III, for the essential requirement of article 3.2 of the RED Directive. (de) Die aufgeführte angegebene Einrichtung hat das aufgeführte EU-Prüfungszertifikat gemäß Anhang III für die wesentliche Anforderung von Artikel 3.2 der Red Richtlinie herausgegeben. (fr) L'organisme notifié répertorié a délivré le certificat d'examen de type UE répertorié, selon l'annexe III, pour l'exigence essentielle de l'article 3.2 de la directive rouge. (es) El organismo notificado listado emitió el certificado de examen de tipo UE listado, de acuerdo con el Anexo III, para el requisito esencial del Artículo 3.2 de la Directiva Roja.	Notified Body: TIMCO Engineering, Inc. Notified Body Number: 1177 Certificate ID: E1177-211448
UK ONLY: The listed Notified Body issued the listed UK-type examination certificate, according to Annex III, for the essential requirement of article 3.2 of the RED Directive.	Notified Body: TIMCO Engineering, Inc. Notified Body Number: 1177 Certificate ID: U1177-211064

Palo Alto, CA
19-03-2024

 **HP Inc.**
1501 Page Mill Road, Palo Alto, CA
Gilles Soulard, Manager
Product Compliance Center

Gilles Soulard
Gilles Soulard, Manager
Consumer PC

(en) Local contact for regulatory topics only
(de) Lokale Ansprechpartner für Richtlinien und Bestimmungen
(fr) Contact local uniquement pour les réglementations
(es) Contacto local únicamente para temas de normativa:

EU: HP REG 23010, 08028 Barcelona, Spain
UK: HP Inc UK Ltd, Regulatory Enquiries, Earley West, 300 Thames Valley Park Drive, Reading, RG6 1PT
U.S.: HP Inc., 1501 Page Mill Road, Palo Alto 94304, U.S.A. 650-857-1501
Email: reg@hp.com

www.hp.eu/certificates

(en) DECLARATION OF CONFORMITY / (de) KONFORMITÄTSERKLÄRUNG / (fr) DÉCLARATION DE CONFORMITÉ / (es) DECLARACIÓN DE CONFORMIDAD

DoC #: HSC-I003-24- R7

(en) ANNEX I (de) ANHANG I (fr) ANNEXE I (es) ANEXO I	
(en) Regulatory Model Number (RMN) (de) Regulatorische Modell Nummer (RMN) (fr) Numéro de modèle réglementaire (RMN) (es) Número de modelo reglamentario (RMN)	HSC-I003-24
1 (en) DESCRIPTION 2 (en) OPTION RMN* 1 (de) BESCHREIBUNG 2 (de) RMN OPTION* 1 (fr) DESCRIPTION 2 (fr) RMN OPTION* 1 (es) DESCRIPCIÓN 2 (es) RMN OPCIÓN*	

1	2
Power Adapter	TPN-XA19 TPN-XA28 TPN-XA22 TPC-XA60 TPN-XA25 TPN-XA18 TPN-XA20 TPC-XA62 TPC-XA61
Wireless LAN+Bluetooth Combo	AX211NGW RTL8821CE RTL8852BE

(en) *Where X represents any alpha numeric character.
 (de) *Wo X steht für eine beliebige alphanumerische Zeichen
 (fr) *Où X représente n'importe quel caractère alphanumérique
 (es) *Donde X representa cualquier carácter alfanumérico

HP Inc.
1501 Page Mill Road
Palo Alto, CA 94304 US

Martin Glagla
Email: mglagla@us.tuv.com

March 1, 2022

Attn: Blanche Shih

Confirmation of ENERGY STAR® certification

Type of Equipment: Integrated Desktop
Model Name: HP ProOne 440 23.8 inch G9 All-in-One Desktop PC (ENERGY STAR);
HP ZHAN 99 Pro 23.8 inch G9 All-in-One Desk-top PC (ENERGY STAR)
Model Number: HSC-I003-24
Product Specification: ENERGY STAR Program Requirements for Computers,
Eligibility Criteria Version 8.0
TUV File Number: CN21RO2J 001

Dear Ms. Shih:

This is notification that TUV Rheinland has certified the performance of the aforementioned product according to the ENERGY STAR® Program Requirements and will report all required information for the certified product to the U.S. Environmental Protection Agency (EPA).

The certified product meets ENERGY STAR® eligibility criteria and will be listed on the ENERGY STAR Qualified Product website if the model is intended for commerce in the U.S. and/or Canada. You may begin labeling the certified product in accordance to your ENERGY STAR® Partnership Agreement and Commitments.

Please review the above for accuracy and address desired changes to the below mentioned contact.

If this product is listed on the ENERGY STAR Qualified Product website it is eligible for re-testing based on the ENERGY STAR randomly selected 'Verification Testing' program. In the event your product is randomly selected a separate notification will be sent out requesting product availability information. This information will be used for quoting the required 'Verification Testing'. Failure to reply to the product availability request within 10 business days will result in further action. This may include forfeiture to use the ENERGY STAR mark and termination of your partner agreement with EPA. TUV Rheinland offers a broad portfolio of service providing global energy efficiency testing solutions, including EPA (ENERGY STAR®), Natural Resources Canada (NRCAN), Energy Related Products (ErP) Directive, Europe EcoLabel, and Germany's Blue Angel Quality Seal as well as Green Services.

If we can be of any further assistance, please do not hesitate to call upon us.

Sincerely,
TUV Rheinland of North America, Inc.



Martin Glagla
Certifier

TUV Rheinland
of North America, Inc.

1279 Quarry Lane, Suite A
Pleasanton, CA 94568

Tel 925-249-9123
Fax 925-249-9124
Toll Free TUV-RHEINLAND
Mail info@tuv.com
Web www.tuv.com

Member of
TUV Rheinland Group

HP ProOne 440 23.8 inch G9 All-in-One Desktop PC ENERGY STAR

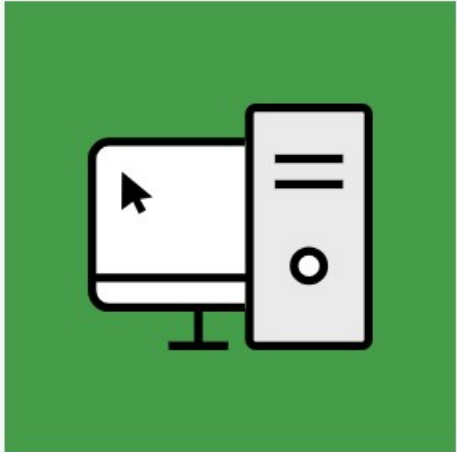
Product Summary:

Product Type:	Integrated Desktop Computer
Registered In:	Spain
Manufacturer:	HP
EPEAT Tier:	Gold
Registration Date:	2022-03-25
Product Status:	Active
Exceptions:	Configurations that are not ENERGY STAR qualified do not meet required criterion 4.5.1.1. Configurations that include the HP Healthcare Wired Keyboard and Mouse or the HP USB Keyboard and Mouse Healthcare Edition do not meet optional criterion 4.1.4.1

Universal Product Code(s): 196337150652, 196337150669, 196337150683, 196337150690, 196337452640

All unique product identifiers existing for this product may not be listed here. If the unique product identifier you are looking for is not listed, please contact EPEAT at EPEAT@GEC.org.

[EXPORT PRODUCT SUMMARY](#)

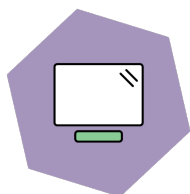


COMPUTERS &
DISPLAYS



CERTIFICATE

TCO Certified, generation 9
for all-in-one pcs



Brand name: HP

Model name: HSC-I003-24

Certification date: 2022-03-15

Expiry date: 2026-03-15

Toward sustainable IT products

TCO Certified is the world-leading sustainability certification for IT products. It is an easy-to-use tool that helps you get environmental and social sustainability right. Criteria are mandatory, tough, and apply globally. Compliance is always independently verified.

For more information, visit tcocertified.com.

No. A922030003

Emma Hagrot
Certification process
TCO Development

This certificate confirms that a sample of the certified product, as stated herein, has been tested and approved as to its compliance with the criteria document valid at the time of the laboratory test. The certified product may, subject to the use of the unique combination of brand name, type/model name and sales name as stated in this certificate, be marked and sold with the TCO Certified label in accordance with the agreement.

Appendix to certificate No. A922030003 -2



Brand name: HP

Model name(s):

HSC-I003-24

Separate power supply: Yes, Class 1 & Class 2
Operating mode sound level: 3.1 B



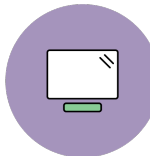
52%
Recycled plastic



8.6 kg
Total weight of product



Energy consumption:
For energy consumption and
yearly emissions, visit
tcocertified.com/product-finder/



Aspect ratio: 16:9
Panel size: 23.8 in
Min. resolution width: 1920 px
Min. resolution height: 1080 px
Type of stand: Non-Pivot

Sales name(s):

HP ProOne 440 23.8 inch G9 All-in-One Desktop PC, HP ProOne 440 23.8 inch G9 All-in-One Desktop PCX, HP ZHAN 99 Pro 23.8 inch G9 All-in-One Desktop PC, HP ZHAN 99 Pro 23.8 inch G9 All-in-One Desktop PCX

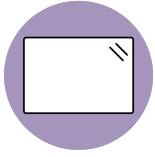
Model name type key(s)

1st * : N/A

2nd * : N/A

Emma Hagrot
Certification process
TCO Development

Appendix to certificate No. A922030003 -2



Panels:

LGD/LM238WF5-SSK2, LGD/LM238WF2-SSP2, BOE/MV238FHM-N61, INNOLUX/M238HCA-L5Z C5, AUO/M238HAN02.2, AUO/M238HAN03.2, AUO/M238HAK01.0, INNOLUX/M238HCA-LCZ



Adapters:

hp/TPC-AA62, hp/TPC-CA60, hp/TPN-CA19, hp/TPN-CA22, hp/TPC-DA61, hp/TPN-DA19, hp/TPN-LA18, hp/TPN-LA20, hp/TPC-LA60, hp/TPC-DA62

A handwritten signature in blue ink, appearing to read 'Emma Hagrot'.

Emma Hagrot
Certification process
TCO Development


THE ECO DECLARATION



Ecma/TC38-TG3/2015/026
(Rev. 1 – 15 April 2015)

Annex B2 - Product environmental attributes Computers and computer monitors

The declaration may be published only when all rows and/or fields marked with * are filled-in (n.a. for not applicable). Additional information regarding each item may be found under P15.


Brand *	HP	Logo 
Company name *	HP	
Contact information * e-mail address	HP Sustainability and Compliance Center sustainability@hp.com	
Internet site *	http://www.hp.com/hpinfo/globalcitizenship/environment/	
Additional information		

The company declares (based on product specification or test results based obtained from sample testing), that the product conforms to the statements given in this declaration.	
Type of product *	Desktop
Commercial name *	HP ProOne 440 23.8 inch G9 All-in-One Desktop PC
Model number *	440 G9
Issue date *	03/14/2022
Intended market *	<input checked="" type="checkbox"/> Global <input type="checkbox"/> Europe <input type="checkbox"/> Asia, Pacific & Japan <input type="checkbox"/> Americas <input type="checkbox"/> Other
Additional information	

This is an uncontrolled copy when in printed form. Please refer to the contact information for the latest version.


About Annex B2

Annex B2 reflects Product environmental attributes relevant for Computers and Computer Monitors. The following items from the ECMA-370 Main body are not shown in the template:
P4.1 – P4.3 Consumable materials
P9.1 TEC and Print speed
P10.2 - P10.3 Chemical emissions from printing products
P11.1 - P11.3 Consumable materials for printing products.

Model number *	440 G9	Logo	
Issue date *	03/14/2022		

Product environmental attributes - Legal requirements		Requirement met		
Item		Yes	No	n.a.
P1 Hazardous substances and preparations				
P1.1*	Products do comply with current European RoHS Directive. (See legal reference and NOTE B1)	<input checked="" type="checkbox"/>	<input type="checkbox"/>	
P1.2*	Products do not contain Asbestos (see legal reference). Comment: Legal reference has no maximum concentration value.	<input checked="" type="checkbox"/>	<input type="checkbox"/>	
P1.3*	Products do not contain Ozone Depleting Substances: Chlorofluorocarbons (CFC), hydrobromofluorocarbons (HBFC), hydrochlorofluorocarbons (HCFC), Halons, carbontetrachloride, 1,1,1-trichloroethane, methyl bromide (see legal reference). Comment: Legal reference has no maximum concentration values.	<input checked="" type="checkbox"/>	<input type="checkbox"/>	
P1.4*	Products do not contain more than; 0,005% polychlorinated biphenyl (PCB), 0,005% polychlorinated terphenyl (PCT) in preparations (see legal reference).	<input checked="" type="checkbox"/>	<input type="checkbox"/>	
P1.5*	Products do not contain more than 0,1% short chain chloroparaffins (SCCP) with 10-13 carbon atoms in the chain containing at least 48% per mass of chlorine in the SCCP (see legal reference).	<input checked="" type="checkbox"/>	<input type="checkbox"/>	
P1.6*	Parts with direct and prolonged skin contact do not release nickel in concentrations above 0,5 µg/cm ² /week (see legal reference). Comment: Max limit in legal reference when tested according to EN1811:2011-5.	<input checked="" type="checkbox"/>	<input type="checkbox"/>	<input type="checkbox"/>
P1.7*	REACH Article 33 information about substances in articles is available at (add URL or mail contact): http://www.hp.com/hpinfo/globalcitizenship/environment/productdata/reachdesktop-pcs.html	<input checked="" type="checkbox"/>	<input type="checkbox"/>	<input type="checkbox"/>
P2 Batteries				
P2.1*	If the product contains a battery or an accumulator, the battery/accumulator is labeled with the disposal symbol. Information on proper disposal is provided in user manual. (See legal reference)	<input checked="" type="checkbox"/>	<input type="checkbox"/>	<input type="checkbox"/>
P2.2*	Batteries or accumulators do not contain more than 0,0005% of mercury or 0,002% of cadmium. (See legal reference)	<input checked="" type="checkbox"/>	<input type="checkbox"/>	<input type="checkbox"/>
P2.3*	Batteries and accumulators are readily removable. (See legal reference)	<input type="checkbox"/>	<input type="checkbox"/>	<input checked="" type="checkbox"/>
P3 Conformity verification & Eco design (ErP)				
P3.1*	The product is CE-marked to show conformance with applicable legal requirements (see legal reference). The Declaration of Conformity can be requested at (add link or e-mail address): http://www8.hp.com/uk/en/certifications/technical/regulations-certificates.html sustainability@hp.com	<input checked="" type="checkbox"/>	<input type="checkbox"/>	<input type="checkbox"/>
P3.2*	The product complies with the Eco design requirements for energy-related products, (see legal reference). Required information is; <input checked="" type="checkbox"/> given in item P15 or added to this document, <input checked="" type="checkbox"/> available at (add URL): https://h22235.www2.hp.com/hpinfo/globalcitizenship/environment/productdata/europeErPLot3desktop-pc.html	<input checked="" type="checkbox"/>	<input type="checkbox"/>	<input type="checkbox"/>
P5 Product packaging				
P5.1*	Packaging and packaging components do not contain more than 0,01% lead, mercury, cadmium and hexavalent chromium by weight of these together.	<input checked="" type="checkbox"/>	<input type="checkbox"/>	
P5.2*	The packaging materials are marked with abbreviations and numbers indicating the nature of the material(s) used (see legal reference).	<input checked="" type="checkbox"/>	<input type="checkbox"/>	<input type="checkbox"/>
P5.3*	The product packaging material is free from ozone depleting substances as specified in the Montreal Protocol (see legal reference). Comment: Legal reference has no maximum concentration values.	<input checked="" type="checkbox"/>	<input type="checkbox"/>	<input type="checkbox"/>
P6 Treatment information				
P6.1*	Information for recyclers/treatment facilities is available (see legal reference).	<input checked="" type="checkbox"/>	<input type="checkbox"/>	<input type="checkbox"/>

NOTE B1 Restriction applies to the homogeneous material, unless other specified and expressed in weight %. Stating "Yes" means that the product is compliant with the mandatory requirements.

Model number *	440 G9	Logo	
Issue date *	03/14/2022		

Product environmental attributes - Market requirements (See General NOTE GN below)				
- Environmental conscious design			Requirement met	
Item	*=mandatory to fill in. Additional information regarding each item may be found under P14.	Yes	No	n.a.
P7	Design			
	Disassembly, recycling			
P7.1*	Parts that have to be treated separately are easily separable	<input checked="" type="checkbox"/>	<input type="checkbox"/>	<input type="checkbox"/>
P7.2*	Plastic materials in covers/housing have no surface coating.	<input type="checkbox"/>	<input checked="" type="checkbox"/>	<input type="checkbox"/>
P7.3*	Plastic parts > 100 g consist of one material or of easily separable materials.	<input checked="" type="checkbox"/>	<input type="checkbox"/>	<input type="checkbox"/>
P7.4*	Plastic parts > 25 g have material codes according to ISO 11469 referring ISO 1043-4.	<input checked="" type="checkbox"/>	<input type="checkbox"/>	<input type="checkbox"/>
P7.5	Plastic parts are free from metal inlays or have inlays that can be removed with commonly available tools.	<input checked="" type="checkbox"/>	<input type="checkbox"/>	<input type="checkbox"/>
P7.6*	Labels are easily separable. (This requirement does not apply to safety/regulatory labels).	<input checked="" type="checkbox"/>	<input type="checkbox"/>	<input type="checkbox"/>
	Product lifetime			
P7.7*	Upgrading can be done e.g. with processor, memory, cards or drives	<input checked="" type="checkbox"/>	<input type="checkbox"/>	<input type="checkbox"/>
P7.8*	Upgrading can be done using commonly available tools	<input checked="" type="checkbox"/>	<input type="checkbox"/>	<input type="checkbox"/>
P7.9	Spare parts are available after end of production for: 5 years			<input type="checkbox"/>
P7.10	Service is available after end of production for: 5 years			<input type="checkbox"/>
	Material and substance requirements			
P7.11*	Product cover/housing material type (e.g. plastics, metal, aluminum): Material type: Steel Material type: aluminum Material type: copper			
P7.12	Insulation materials of external electrical cables are PVC free.	<input type="checkbox"/>	<input checked="" type="checkbox"/>	<input type="checkbox"/>
P7.13	Insulation materials of internal electrical cables are PVC free.	<input checked="" type="checkbox"/>	<input type="checkbox"/>	<input type="checkbox"/>
P7.14	External plastic casing/cover parts > 25 g contain no more than 0,1% weight (1000 ppm) bromine and 0,1% weight (1000 ppm) chlorine attributable to brominated flame retardants, chlorinated flame retardants, and polyvinyl chloride or 0,3% weight (3000 ppm) bromine and 0,3% weight (3000 ppm) chlorine in parts containing more than 25% post-consumer recycled content.	<input checked="" type="checkbox"/>	<input type="checkbox"/>	<input type="checkbox"/>
P7.15	Printed circuit boards, PCBs (without components) are low halogen: all <input type="checkbox"/> PCBs > 25 g <input checked="" type="checkbox"/> are low halogen as defined in IEC 61249-2-21. (See 1NOTE B2)	<input checked="" type="checkbox"/>	<input type="checkbox"/>	<input type="checkbox"/>
P7.16	Flame retarded plastic parts > 25 g in covers / housings are marked according ISO 1043-4: Marking: >PC+ABS-FR(40)(REC75)<	<input checked="" type="checkbox"/>	<input type="checkbox"/>	<input type="checkbox"/>
P7.17	Alt. 1: Chemical specifications of flame retardants in printed circuit boards > 25 g (without components): TBBPA (additive) <input type="checkbox"/> , TBBPA (reactive) <input type="checkbox"/> (See NOTE B3), Other; chemical name: , CAS #: Alt. 2: Chemical specifications of flame retardants in printed circuit boards (without components) > 25 g according ISO 1043-4: FR(40)	<input type="checkbox"/>	<input type="checkbox"/>	<input type="checkbox"/>
P7.18	Alt. 1: Flame retarded plastic parts > 25 g contain the following flame retardant substances/preparations in concentrations above 0,1%: 1. Chemical name: , CAS #: (See NOTE B4) 2. Chemical name: , CAS #: " 3. Chemical name: , CAS #: " Alt. 2: Chemical specifications of flame retardants in plastic parts > 25 g according ISO 1043-4: >PC+ABS-FR(40)(REC75)<	<input type="checkbox"/>	<input type="checkbox"/>	<input type="checkbox"/>
P7.19	In plastic parts > 25 g, flame retardant substances/preparations above 0,1% are used which have been assigned the following Risk phrases; R53 and Hazard statements: H413 - May cause long-lasting harmful effects to aquatic life The source(s) for these classifications is/are found at (add URL(s)): http://echa.europa.eu/web/guest/information-on-chemicals/cl-inventory-database (See note B5)	<input checked="" type="checkbox"/>	<input type="checkbox"/>	<input type="checkbox"/>
P7.20*	Postconsumer recycled plastic material content is used in the product (See Note B6 and B7): If YES; at least one of the two alternatives below shall be answered;	<input checked="" type="checkbox"/>	<input type="checkbox"/>	<input type="checkbox"/>

GENERAL NOTE Standard references should direct to the latest version of a standard. If an older version of a standard is used, section P15 shall be used for explanation.

NOTE B2: IEC 61249-2-21 defines maximum limits of 900 ppm for each of the substances chlorine and bromine and a maximum limit of 1500ppm of these substances combined. The standard does not address fluorine, iodine and astatine which are included in the group of halogens.


NOTE B3 and B4 A Guidance document on Chemical substances is available; see <http://www.ecma-international.org/publications/standards/Ecma-370.htm>

NOTE B5: If a certain substance has been assigned a certain risk phrases / hazard statement in the referenced source, this does not necessarily mean the substance has been tested for all of the hazards referred to by a certain customer.

NOTE B6: Applies to a product containing plastic parts whose combined weight exceeds 100 g with the exception of printed circuit boards, cables, connectors and electronic components and bio-based plastic material.

NOTE B7: Recycled plastic content percentage is based on the definition set in the IEEE 1680.1-2018 standard, criterion 4.2.1

a)	Of total plastic parts' weight > 25 g, the postconsumer recycled plastic material content (calculated as a percentage of total plastic by weight) is 46.6% .
or	
b)	The weight of recycled material is g.

Model number *	440 G9	Logo	
Issue date *	03/14/2022		


Product environmental attributes - Market requirements (continued)		Requirement met		
Item		Yes	No	n.a.

Material and substance requirements (continued)						
P7.21*	Biobased plastic material content is used in the product (See NOTE B7): If YES; at least one of the two alternatives below shall be answered; a) Of total plastic parts' weight > 25 g, the biobased plastic material content (calculated as a percentage of total plastic by weight) is %. or b) The weight of the biobased plastic material is g.			<input type="checkbox"/>	<input checked="" type="checkbox"/>	<input type="checkbox"/>
P7.22*	Light sources are free from mercury, i.e. less than 0,1 mg/lamp. If mercury is used specify: Number of lamps: and maximum mercury content per lamp: 0 mg			<input checked="" type="checkbox"/>	<input type="checkbox"/>	<input type="checkbox"/>
P7.23*	If product includes an integral display, the total mercury content in the integrated display: 0 mg			<input checked="" type="checkbox"/>	<input type="checkbox"/>	<input type="checkbox"/>
P8 Batteries						
P8.1*	Battery chemical composition: <i>lithium/manganese dioxide</i>			<input type="checkbox"/>		
P9 Energy consumption (See NOTE B8)						
P9.1 For the product the following power levels or energy consumptions are reported:						
Energy mode *	Power level at 100 V AC	Power level at 115 V AC	Power level at 230 V AC	Reference/Standard for energy modes and test method *	<input type="checkbox"/>	
EPS No-load (External power supply / charger plugged in the wall outlet but disconnected from the product.)	0.11 W	0.11 W	0.116 W	<i>EPS Energy Report Data</i>	<input type="checkbox"/>	
PTEC * Typical Energy Consumption	W	W	W	<i>ENERGY STAR® Program Requirements for Computers</i>	<input checked="" type="checkbox"/>	
ETEC * Annual Energy Consumption	49.34 kWh/year	49.41 kWh/year	49.47 kWh/year	<i>ENERGY STAR® Program Requirements for Computers</i>	<input type="checkbox"/>	
External Power Supply Efficiency Level (International Efficiency Marking Protocol) * : <i>N/A</i>				<i>ENERGY STAR® Program Requirements for Computers</i>	<input type="checkbox"/>	
Display resolution * : 1920*1080 megapixels				<i>ENERGY STAR® Program Requirements for Computers</i>	<input type="checkbox"/>	
Default time to enter energy save mode: minutes				<i>ENERGY STAR® Program Requirements for Computers</i>	<input checked="" type="checkbox"/>	
P9.2*	Information about the energy save function is provided with the product.			<input checked="" type="checkbox"/>	<input type="checkbox"/>	<input type="checkbox"/>
P9.3	Energy efficiency class (monitors only): VI					<input type="checkbox"/>
P10 Emissions						
Noise emission – Declared according to ISO 9296 (See NOTE B9)						
P10.1	Mode	Mode description	Statistical upper limit A-weighted sound power level, $L_{WA,c}$ (B)			
	Idle	<i>* Fans on, HDD spinning (if applicable)</i>	<i>* 2.6</i>		<input type="checkbox"/>	
	Operation	<i>* Fans on, HDD spinning</i>	<i>* 3.0</i>		<input type="checkbox"/>	
	Other mode					

NOTE B7 The following is to be excluded from the calculation of percentage: printed circuit boards, labels, cables, connectors and electronic components and postconsumer recycled plastic

NOTE B8 A Guidance document on Energy Efficiency is available; see <http://www.ecma-international.org/publications/standards/Ecma-370.htm>

NOTE B9 A Guidance document on Acoustic Noise is available; see <http://www.ecma-international.org/publications/standards/Ecma-370.htm>

Model number *	440 G9	Logo				
Issue date *	03/14/2022					
Product environmental attributes - Market requirements (continued)				Requirement met		
Item				Yes	No	n.a.
Electromagnetic emissions						
P10.4	Computer display meets the requirement for low frequency electromagnetic fields of the following voluntary program(s):			<input type="checkbox"/>	<input type="checkbox"/>	<input type="checkbox"/>
P12 Ergonomics for computing products						
P12.1*	The display meets the ergonomic requirements of ISO 9241-307 for visual display technologies.			<input checked="" type="checkbox"/>	<input type="checkbox"/>	<input type="checkbox"/>
P12.2*	The physical input device meets the requirements of ISO 9995 and ISO 9241-410.			<input checked="" type="checkbox"/>	<input type="checkbox"/>	<input type="checkbox"/>
P13 Packaging and documentation						
P13.1*	Product packaging material type(s): PAPER/Corrugated Product packaging material type(s): PAPER/Paperboard Product packaging material type(s): PLASTIC/Polyethylene low density - LDPE Product packaging material type(s): PLASTIC/Polyethylene Expanded - EPE			weight (kg): 2.827 weight (kg): 0.090 weight (kg): 0.045 weight (kg): 0.182		
P13.2*	Product plastic primary packaging is free from PVC.			<input checked="" type="checkbox"/>	<input type="checkbox"/>	<input type="checkbox"/>
P13.3*	For product primary corrugated fiberboard packaging, specify the contained percentage of minimum post-consumer recovered fiber content: 90 %					<input type="checkbox"/>
P13.4*	Specify media for user and product documentation (tick box): Electronic <input checked="" type="checkbox"/> , Paper <input type="checkbox"/> , Other <input type="checkbox"/>					<input type="checkbox"/>
P13.5	(Please only complete this item if paper documentation used) User and product documentation on paper media is chlorine-free: If Yes, please specify: Totally chlorine-free Elemental chlorine-free Processed chlorine-free			<input checked="" type="checkbox"/> <input checked="" type="checkbox"/> <input type="checkbox"/> <input type="checkbox"/>	<input type="checkbox"/>	
P14 Voluntary programs						
P14.1	The product meets the requirements of the following voluntary program(s):					
	ENERGY STAR®	Criteria version: 8.0	Date: 3/14/2022	Product category: Commercial Desktop AIOs		
	Eco-label: TCO	Criteria version: 9.0	Date: 3/14/2022	Product category: Commercial Desktop AIOs		
	Eco-label: EPEAT	Criteria version: IEEE 1680.1	Date: 3/14/2022	Product category: Commercial Desktop AIOs		
P15 Additional information (See NOTE B10)						
All Sections	1. Product environmental information contained in this declaration is valid as of the date the declaration is published. Changes to external standards referenced in the IT Eco-Declaration may invalidate some information contained in this declaration over					
P1	1. This product does not include DEHP, BBP, DIBP, or DBP.					

NOTE B10 Additional lines may be inserted to declare further items, by positioning the cursor at the far right of the row and hitting the <Enter> key.

P7 Product Upgradability and Reparability

The following table is provided in accordance with IEEE 1680.1-2018⁶ criterion 4.4.2.5.

feature	Available [1]	Repairable [2]	Replaceable [3]	Upgradeable [4]
processor	Y	Y	Y	Y
main memory	Y	Y	Y	Y
mass storage (internal)	Y	Y	Y	Y
wireless networking	Y	Y	Y	Y
integrated graphics	Y	Y	Y*	Y
discrete graphics	Y*	Y	Y*	N
display panel	Y	Y	Y	Y
integrated keyboard	N	N/A	N/A	N/A
batteries	Y	Y	Y	Y
power supply	Y	Y	Y	Y
fan assemblies	Y	Y	Y	N
speaker(s) (internal)	Y*	Y	Y	N
camera	Y*	Y	Y	Y
touchpad	N	N/A	N/A	N/A
I/O connectors and external power connector	Y	Y	Y	Y
readers [5]	Y*	Y	Y	N

Table notes:

[1] Y* = feature is available, but may not be included in every configuration

[2] Product can be repaired (returned to fully functional state) if feature fails.

[3] Feature can be replaced using only commonly available tools without soldering or de-soldering. Y* = replacement may require replacing an assembly to which the feature is attached.

[4] Base feature may be upgraded by replacing it with a higher performance module or by expanding capacity through use of expansion slots. NOTE: This evaluation does not account for situations in which the initial configuration purchased is already maximized. Contact HP Sales or an HP authorized reseller to determine the availability of upgrade parts and method to obtain them in your geography.

[5] This feature category includes readers such as fingerprint readers, smart card readers, and other read-only devices, but excludes read/write devices.

P9 Energy consumption of computer products; description of the tested product configuration:

P9 1. European Union Commission Regulation 1275/2008- Energy Efficiency Information:

Mode / Condition	Power Consumption in Watts at 230 VAC Input Voltage	Default Time to Mode / Condition (if applicable)
Off Mode (if applicable)	N/A	Not Applicable
Standby Mode (if applicable)	Not Applicable	Not Applicable
Network Standby / Sleep / Long Idle Mode if all wired network ports are connected and all wireless network ports are activated (if applicable)	N/A	N/A
Network Standby / Sleep / Long Idle Mode (if applicable)	N/A	N/A

2. European Union Commission Regulation 1275/2008- Wireless Network Instructions:

Where applicable, activate and deactivate a wireless network using the instructions provided in the product user guide or the operating system. Information is also available at www.hp.com/support.

P10 Sound Pressure Level

Noise emission – Declared according to ISO 9296 (See NOTE B9)

P10.1	Mode	Mode description	Statistical upper limit A-weighted sound pressure level, $L_{pA,m}$ (dB)	
	Idle	* Fans on, HDD spinning (if applicable)	* 14.4	<input type="checkbox"/>
	Operation	* Fans on, HDD spinning	* 18.1	<input type="checkbox"/>
	Other mode			


⁶ IEEE Standard for Environmental and Social Responsibility Assessment of Computers and Displays

Measured according to: ISO 7779 ECMA-74
 Other (only if not covered by ECMA-74)

Legal references Europe Annex B2

Reference	Declaration item
Directive 2011/65/EU (RoHS Directive) * * Specific exemptions apply for certain products and applications.	P1.1
Regulation (EC) 1907/2006(REACH, Annex XVII)	P1.2, P1.4, P1.6, P1.7
Regulation (EC) 2037/2000, 2038/2000, 2039/2000 (Marketing and use of Ozone layer depleting substances)	P1.3, P5.3
Norwegian regulation relating to restrictions on the use of certain dangerous chemicals 20.12.2002	P1.5
Directive 2013/56/EC (Battery and accumulators Directive) * * These provisions shall not apply where, for safety, performance, medical or data integrity reasons, continuity of power supply is necessary and requires a permanent connection between the appliance and the battery or accumulator.	P2.1, P2.2, P2,3, P8.1
Directive 2006/95/EC (Low Voltage Directive)	P3.1
Directive 2004/108/EC (EMC Directive)	P3.1
Directive 1999/5/EC (R&TTE Directive)	P3.1
Regulation (EC) 801/2013 amending Regulation (EC) No 1275/2008 with regard to ecodesign requirements for standby, off mode electric power consumption of electrical and electronic household and office equipment, and amending Regulation (EC) No 642/2009 with regard to ecodesign requirements for televisions	P3.1, P3.2
Regulation (EC) No 1272/2008 (CLP Regulation)	P7.19
Directive 2004/12/EC (Packaging Directive)	P5.1
Decision 97/129/EC (Secondary packaging legislation)	P5.2
Directive 2012/19/EU (WEEE directive)	P6.1

Company environmental profile - THE ECO DECLARATION

Brand	HP	Logo	
Company name *	HP		
Contact information *	HP Sustainability and Compliance Center (SCC) sustainability@hp.com		
Internet site *	www.hp.com/hpinfo/globalcitizenship/environment/index.html		
Issue date *	2014-06-01		
Intended market *	<input checked="" type="checkbox"/> Global <input type="checkbox"/> Europe <input type="checkbox"/> Asia, Pacific & Japan <input type="checkbox"/> Americas <input type="checkbox"/> Other		
Additional information			

This is an uncontrolled copy when in printed form. Please refer to the contact information for the latest version.

The declaration may be published only when all rows and/or fields marked with an * are filled-in (n.a. for not applicable). Additional information regarding each item may be found under C7.

Company environmental profile - Legal requirements		Requirement met		
Item		Yes	No	n.a.
C1	Product recycling			
C1.1*	The company participates in a system or has its own system for collection and recycling of end of life products in countries where the company puts them on the market and where required (see legal reference)	<input checked="" type="checkbox"/>	<input type="checkbox"/>	
C2	Battery recycling			
C2.1*	The company participates in a system or has its own system for collection and recycling of batteries in countries where the company puts products on the market (see legal reference) or pays eco tax / fee where required.	<input checked="" type="checkbox"/>	<input type="checkbox"/>	
C3	Packaging recycling			
C3.1*	The company participates in a system or has its own system for collection and recycling of packaging material in countries where the company puts products on the market and where required (see legal reference)	<input checked="" type="checkbox"/>	<input type="checkbox"/>	

Company environmental profile - Market requirements		Requirement met		
Item		Yes	No	n.a.
C4	Environmental policy and environmental management			
C4.1*	The company has a documented environmental policy approved by the management.	<input checked="" type="checkbox"/>	<input type="checkbox"/>	
C4.2*	The company has an environmental management system covering: Product development Manufacturing If so certified according to: <input checked="" type="checkbox"/> ISO 14001 <input checked="" type="checkbox"/> Other as specified in C7	<input checked="" type="checkbox"/>	<input type="checkbox"/>	
C4.3	The company regularly publishes an environmental report. If so, it meets the recommendations of <input checked="" type="checkbox"/> ISO 14001 <input type="checkbox"/> 7	<input checked="" type="checkbox"/>	<input type="checkbox"/>	<input type="checkbox"/>
C5	Recycling			
C5.1*	Information about the product, battery & packaging take back system (C1, C2 and C3) is available in printed or electronic format.	<input checked="" type="checkbox"/>	<input type="checkbox"/>	
C6	Voluntary programs			
C6.1	The company meets the requirements of the following voluntary program/s: Voluntary Agreement: Criteria version: Date: Product category: Voluntary Agreement: Criteria version: Date: Product category:			
C7	Additional information			
	<p><i>HP has received ISO 14001 certification for its manufacturing operations (Worldwide Manufacturing of Computing and Imaging Products and Related Operations) and for product design for its Personal Systems Products and LaserJet and Enterprise Printing Products. The product design certifications include HP-wide product environmental design processes (such as HP's General Specification for the Environment) that cover all HP products.</i></p> <p><i>HP is committed to responsible business practices and transparency in its global citizenship policies and performance. We have a long history of working with suppliers to monitor and improve their social and environmental responsibility (SER) performance when required, as well as improving standards in the industry. HP endorses the EICC Code of Conduct in its entirety, and we have supplemented it with additional requirements specific to freedom of association as well as HP's Student and Dispatch Worker Guidance Standard for Supplier Facilities in the People's Republic of China (PRC). HP also has a strong Global Human Rights Policy in place. HP expects its suppliers to establish policies and processes regarding conflict minerals. HP conducts due diligence on its supply chain annually including requesting information about our suppliers' own due diligence and the smelters and refiners used. HP was the first IT company to publish its supply chain smelter list. HP follows the Global Reporting Initiative (GRI) guidelines as a basis for reporting. The GRI index provides easy reference to HP's Living Progress Report (LPR) content. HP offers take back services of products and printing suppliers in some 70 countries. Please refer to HP's Living Progress Report for more details on our global efforts.</i></p>			

Legal references Europe Annex A

Reference	Declaration item
Directive 2012/19/EU (WEEE directive)	C1.1
Directive 2006/66/EC (Battery and accumulators Directive) * * These provisions shall not apply where, for safety, performance, medical or data integrity reasons, continuity of power supply is necessary and requires a permanent connection between the appliance and the battery or accumulator.	C2.1
Directive 2004/12/EC (Packaging Directive)	C3.1
Decision 97/129/EC (Secondary packaging legislation)	C3.1

Product Carbon Footprint Report

HP ProOne 440 23.8 inch G9 All-in-One Desktop PC ENERGYSTAR



Estimated impact

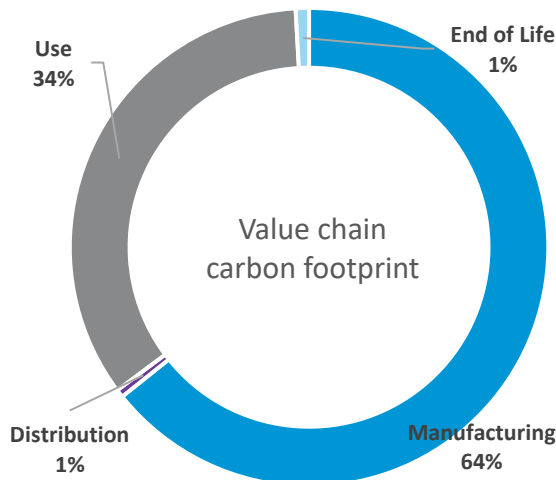
433
kg CO₂ eq.



As part of HP's commitment to continually improve the environmental performance of our products, we utilize product carbon footprinting (PCF) to better understand environmental impacts that occur at different stages of the product life cycle. A product carbon footprint is defined as the total amount of greenhouse gases emitted directly and indirectly by a product over its lifetime. Our product carbon footprints include full value chain emissions, which incorporates carbon emissions due to raw materials extraction, manufacturing, distribution, use, and product end-of-use.

The information provided here represents the lifecycle carbon footprint of an industry-average all-in-one computer with the specifications listed in Assumptions table.

GHG Emissions



Manufacturing Breakout

Mainboard and other boards	31.3%
Solid State Drive (SSD)	30.6%
Display	22.7%
Chassis	5.3%
Power Supply Unit & External Cables	4.8%
Others*	3.0%
External components (Keyboard & Mouse)	1.2%
Packaging	1.1%

HP's environmental impact calculations are done in accordance with ISO 14040/44. All estimates of impact results are uncertain, resulting largely from data limitations and data quality. To mitigate this uncertainty, HP has developed HP-specific tools that use a combination of HP processes and product data, as well as high-quality lifecycle assessment data. HP strives to provide the most accurate environmental impact results but uncertainty will never be completely minimized and results should be considered accordingly.

Assumptions	Value
Lifetime of product (years)	5
Use location	North America
Use energy demand (kWh/year)	55.55
Product weight (kg)	9.1
Screen size (in)	23.8"
Final manufacturing location	China

Additional product environmental performance

Additional information about HP's carbon footprinting program can be found in HP's yearly Sustainability Report, which is available on the HP Sustainability website.

The site also contains IT Eco Declarations, which provide product-specific environmental information, as well as information on HP's product recycling programs.

* Others section includes assembly energy, other subassemblies and all subassemblies packaging and transport

Learn more at

[HP's Sustainability Website](#)

© Copyright 2021 HP Development Company, L.P. The information contained herein is subject to change without notice. The only warranties for HP products and services are set forth in the express warranty statements accompanying such products and services. Nothing herein should be construed as constituting an additional warranty. HP shall not be liable for technical or editorial errors or omissions contained herein.

